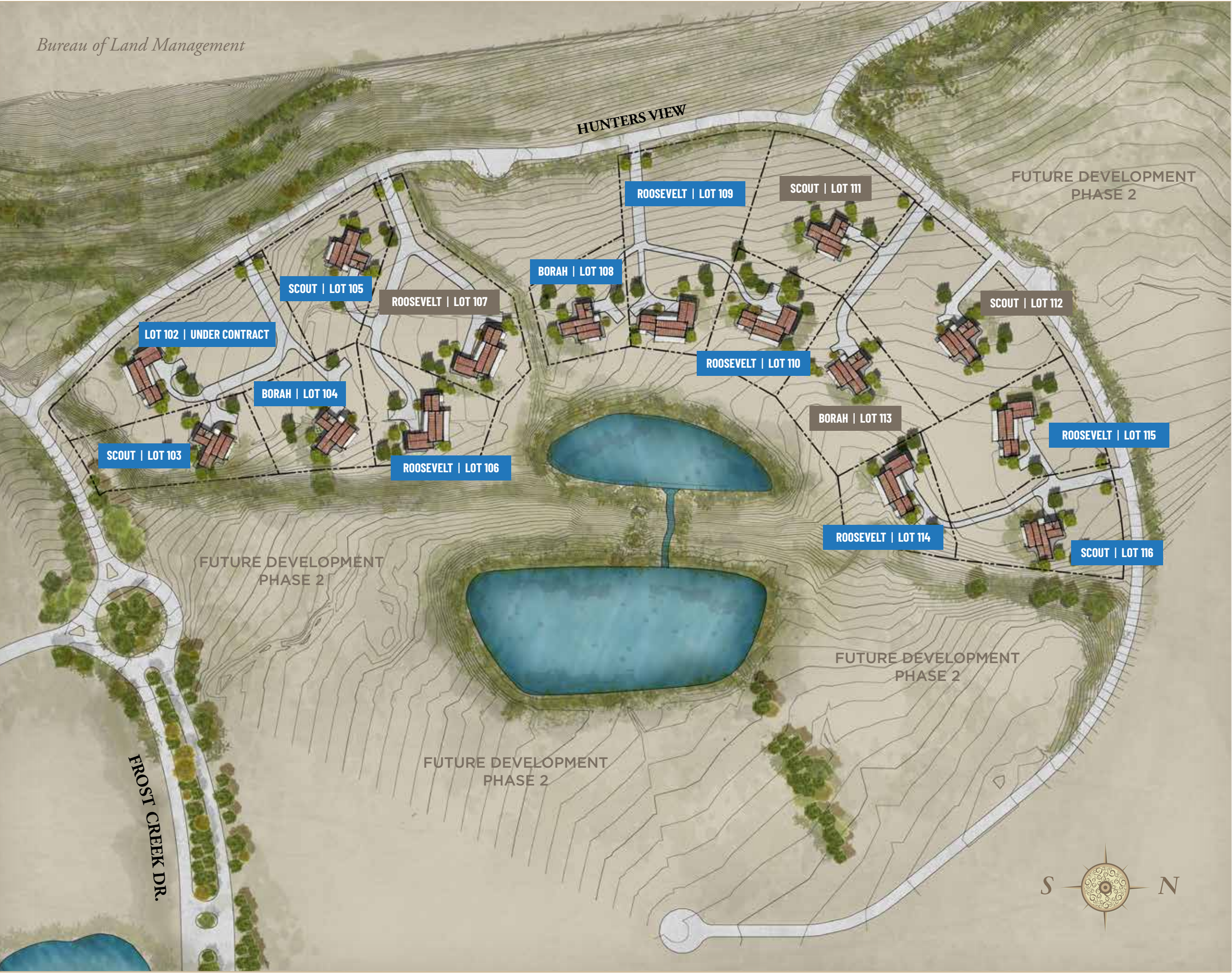






Bureau of Land Management



INTRODUCING FROST CREEK'S NEWEST  
REAL ESTATE OFFERING.

# HUNTER'S *View*



SCOUT 2,300 SF / 3 Bed / 2.5 Bath



BORAH 2,680 SF / 4 Bed / 3.5 Bath



ROOSEVELT 2,875 SF / 4 Bed / 3.5 Bath



FOR MORE INFORMATION CONTACT:

Katherine "Kakie" Holland  
DIRECTOR OF SALES, GRI, CNE  
970.455.3072 (O) / 970.319.5585 (M)  
kholland@frostcreek.com

1094 Frost Creek Dr., Eagle, CO 81631

Mailing: PO Box 659, Eagle,  
Colorado 81631

[www.frostcreek.com/huntersview](http://www.frostcreek.com/huntersview)