



VIEWS, VIEWS and MORE VIEWS!



**P**ERFECTLY PERCHED ON THE HIGHEST POINT to see the entire 1100-acre private Club of Frost Creek and Brush Creek Valley, this thoughtfully and elegantly designed custom Frost Creek home, completed in December 2020, will take your breath away! With 360-degree views, large picture windows display the “see forever” feeling of sitting on Top Of The World! Looking south towards Mt Thomas and the Sawatch Range and down onto the picturesque Tom Weiskopf designed golf course, the dotted ponds across the fairway mirror back the lushness of the valley. This 5476 total square foot home sits on top of a private 4-acre hill that divides and distinguishes the northside of Frost Creek from the southside like a throne, privileged and blessed. This is the 3rd resale custom home at Frost Creek in the last 6+ years, so to say this is a rare opportunity is an understatement!



FOR MORE INFORMATION CONTACT:

**Katherine “Kakie” Holland**  
DIRECTOR OF SALES, GRI, CNE  
970.455.3072 (O) / 970.319.5585 (M)  
kholland@frostcreek.com

**Lynne Sandoval**  
SALES EXECUTIVE  
970.455.3072 (O) / 303.551.2689 (M)  
lsandoval@FrostCreek.com

1094 Frost Creek Dr., Eagle, CO 81631

Mailing: PO Box 659, Eagle,  
Colorado 81631

[www.frostcreek.com/real-estate](http://www.frostcreek.com/real-estate)

# 2445 FROST CREEK DR.

Total 5,476 SF - Living 4,086 SF / Garage & Workshop 1,114 SF /  
Decks, Patios & Walkways 1,251 SF  
4 Bed / 5.5 Bath



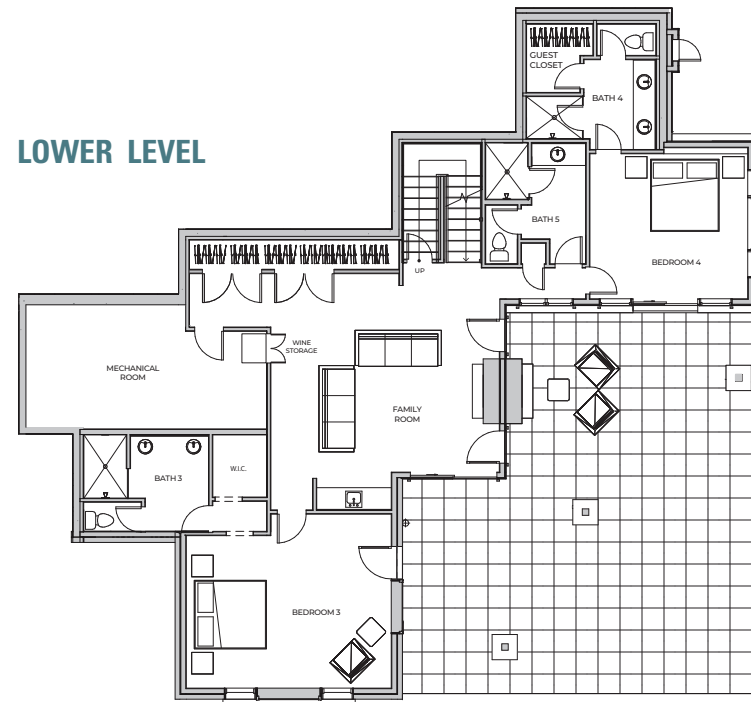
# 2445 FROST CREEK DR.

5,476 SF / 4 Bed / 5.5 Bath / Workshop

## MAIN LEVEL



## LOWER LEVEL



**WITH EXPANSIVE OUTDOOR LIVING SPACE** and a babbling-brook water feature trickling alongside of the home, this extraordinary residence is beautifully designed with 4086 livable square feet hosting 4 large Master Bedrooms (2 on the main level and 2 on the lower level) with ensuite baths and outdoor patio or deck access for all.



### WHAT WE LOVE ABOUT THIS HOME

- Thoughtfully and Elegantly Designed
- Main Level Living with 2 Bedrooms, 2.5 baths, Great Room, Office, Laundry, Deck and Patio Access
- 1251 SF of Outdoor Living Space between the Decks, Patio and Walkways
- Outdoor Water Feature and Outdoor Spa Jetted Tub
- 3 Car Garage with additional work room/fitness room and private patio
- 4 Spacious Master Bedrooms/Ensuite Baths with Outdoor Deck or Patio Access
- 5th Bathroom for Lower-Level Den and Outdoor patio use
- 2 Wet Bars (Main-Level Dining Area and Lower-Level Den)

